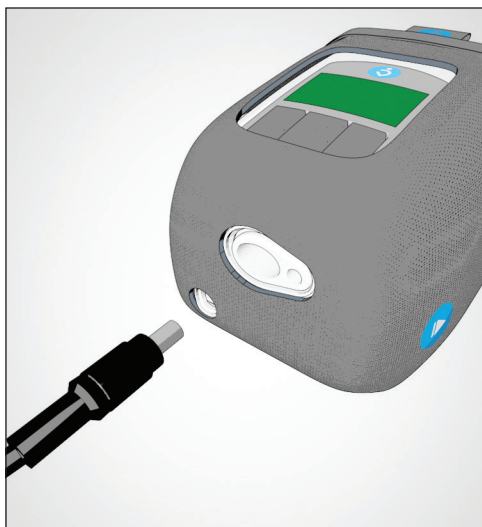


Charging the battery.

1. With both the Z1 and the battery fully inserted into the PowerShell, plug the power supply (AC to DC Adapter) as shown in the wall outlet. The Z1 must be in standby mode (display reads 0.0) to charge the battery.



2. The battery status indicator on the Z1 (🔋) will flash when the battery is charging. The number of solid bars indicates the current level of charge.



The Z1 can be removed from the PowerShell by pressing the two (⏪) icons on the sides of the PowerShell and sliding the Z1 out.

The battery can be removed from the PowerShell by the two blue buttons on the battery shuttle and sliding the battery out.

If you encounter problems consult the Z1 User Guide or contact Breas or your health care provider.

 Breas Medical AB
Företagsvägen 1
SE 435 33 Mölnlycke
SWEDEN

PowerShell™ and Z1™ are trademarks of Human Design Medical, LLC.
Patent Pending. © Copyright 2013, Breas Medical AB. All rights reserved.

BREAS

CE 0123



PowerShell Getting Started
Doc. HD40-0012-02 En L-1

PowerShell™ Getting Started Guide



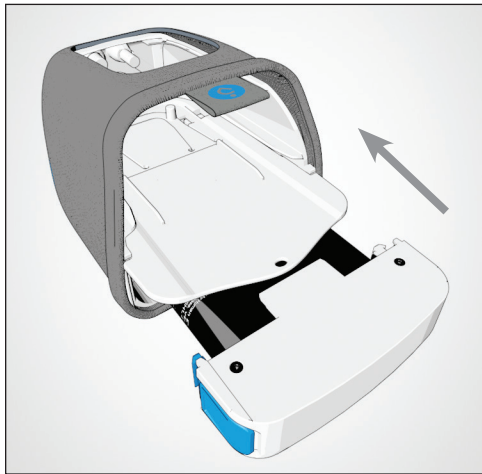
Z1™

Welcome!

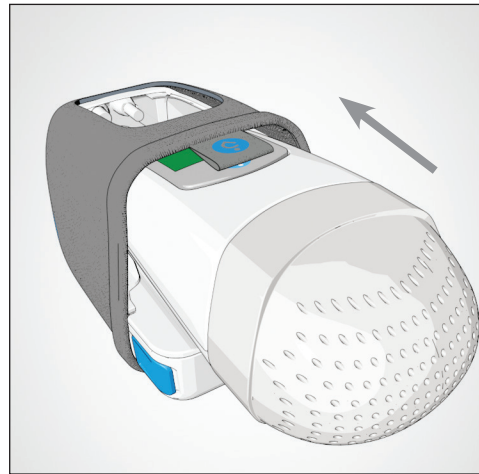


The PowerShell is an integrated battery carrier that unifies everything you need for a great night's sleep without cords. Please read the entire Z1™ User Guide.

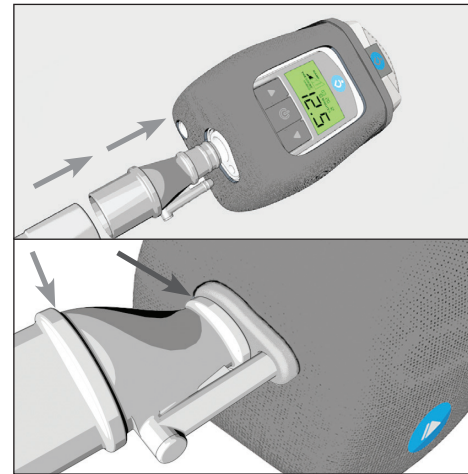
1. Slide the battery into the lower bay of the PowerShell until you hear the shuttle click indicating the battery has locked into place.



2. Slide the Z1 all the way into the upper bay of the PowerShell. You will hear the Z1 click indicating that it has locked into place. The Z1 will power on in standby mode. The display will read 0.0.



3. Connect one end of the CPAP tube to the round end of the tube adapter. Insert the other end of the tube adapter into the outlet of the Z1 as shown. Connect the other end of the CPAP tube to the mask. Ensure all connections are tight to avoid air leaks.



4. Push the start/stop button (⏻) to initiate therapy using the pre-programmed prescription setting. Push this button a second time to stop therapy.



IMPORTANT: The “REMINDER” indicator will display on the Z1 if an air leak is detected between the Z1 outlet and the mask. This may also display at times when the mask is not being worn properly. This common condition should clear once all connections are secure, the mask is properly worn, and therapy has begun.

NOTE: It is recommended that you fully charge the battery prior to each use. Instructions on how to charge the battery are available on the back of this Getting Started Guide.

IMPORTANT: Remove the battery from the PowerShell when the Z1 is not in use, unless the power supply is plugged into the PowerShell to charge the battery. Otherwise the Z1 and PowerShell will drain the battery completely in 2-3 days.

IMPORTANT: The PowerShell uses lithium ion batteries that may require special handling in certain situations. Please read the PowerShell section in the Z1 User Guide to familiarize yourself with charging, maintenance, handling, and disposal of lithium-based batteries.